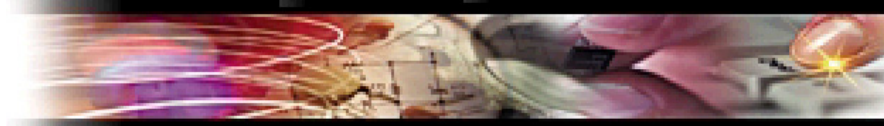


## AP1005 VoIP Gateway High-performance, Compact Design



### VoiceFinder AP1005 VoIP Gateway



VoiceFinder AP1005 VoIP Router provides high-performance voice over IP(VoIP) solution including IP-routing services for small enterprise, and other public offices as well as Internet game room and Internet based cyber apartment. This VoiceFinder AP1005 VoIP Gateway maintains best voice quality under low speed network using the latest voice compression algorithm and

enhanced QoS management features of AddPac Technologies.

In addition, VoiceFinder AP1005 VoIP Gateway can be used in various network environments such as leased line, ADSL, and Cable Modem networking with fixed IP and dynamic IP environments. And VoiceFinder AP1005 VoIP Gateway supports various network protocols such as IP-routing, bridging, PPP, NAT/PAT, and network management features such as SNMP MIB v2, Cisco-style CLI, Web, etc. This VoIP gateway typically is designed using high-performance 32bit RISC microprocessor based architecture with fixed network interface configuration : 4-Ports FXO Voice Interfaces for VoIP Service, 2-Ports 10Mbps Ethernet Interface for LAN & WAN Interfaces, 1-Port RS-232C Console Port

### APOS Internetworking Software for AP VoIP Gateway

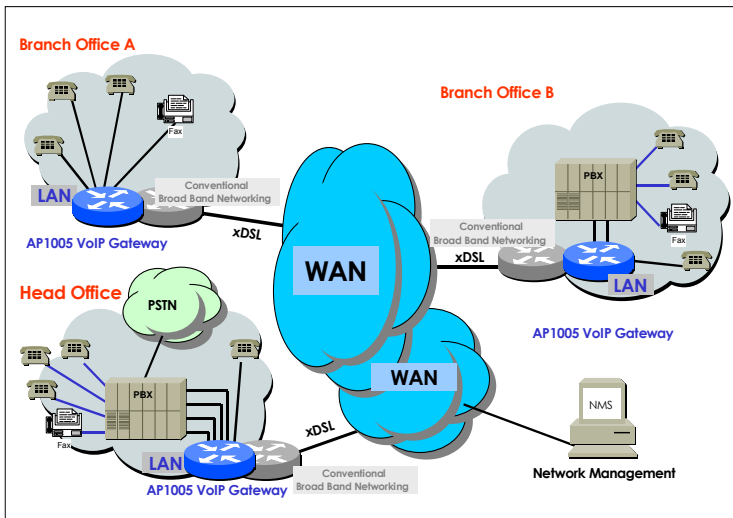
AddPac VoiceFinder Operating System(APOS) is a best VoIP Gateway and Router software to provide scalability, reliability, stability, and QoS for internetworking solutions. APOS also provides optimized performance and industry standard network functionality with easy-to-use, easy-to-installation, and maintenance.

The AP1005 VoIP Gateway provides [best price-performance ratio](#) and [effective voice & data networking solution](#) for customer satisfaction.

### Product Highlights

- Powerful 32bit RISC Microprocessor Architectures
- Fixed Dual 10Mbps Ethernet Interfaces
- High-performance Four(4) FXO Voice Interfaces
- Standard High-performance VoIP Gateway for Voice Networking Applications
- Multi-protocol Routing Solutions between WAN and LAN Access with H.323 based VoIP Protocol
- AddPac APOS Internetworking Software to provide Scalability, Functionality, Stability, and QoS Control for AddPac VoIP Gateway
- High-performance IP-Routing Capability with Reliability
- ITU-T H.323 v3 VoIP Protocol with ITU-T H.235 Security Feature
- SIP protocol support compliant with IETF RFC3261 (or RFC2543)
- H.323 and SIP dual stack support
- G.723.1, G.729A, G.711 Voice Compressions
- Static, Default IP-Routing and IEEE 802.1Q VLAN Routing Protocols
- Point to Point Protocol for ADSL based Broadband Network
- Enhanced QoS Managements for Voice Traffic
- SNMP MIB v2 for Network Management Features
- Standard & Extended Access List for Security Functions
- Essential Scalability Features such as DHCP Server & Relay, NAT/PAT, IEEE Transparent Bridging, IP Accounting, and Debugging / Diagnostics, etc.
- Remote Software Upgrade using FTP & TFTP
- Graceful Compact Enclosure Design with beautiful color

## Network Diagram Using AP1005 VoIP Gateway



## Hardware Specification

### Microprocessor

- CPU 32bit RISC Microprocessor

### Memory

- Flash Memory 2Mbyte
- Main Memory 16M byte High-Speed SDRAM
- Boot Memory 512Kbyte Flash Memory

### Network Interface

- Fixed LAN Port Two(2) 10Mbps Ethernet
- Console Port One(1) RS-232C Interface

### Voice Interface

- FXO Voice Module 4 Port FXO Voice Interface

### Power & Operation Environments

- Power Requirement VAC 110~220V, 50/60Hz, 10Watt
- Operating Temperature 0°C to + 55°C (32° to 112°F)
- Storage Temperature -40°C to + 85°C (-40° to 176°F)
- Relative Humidity 5% to 95% (Non-condensing)

### Dimensions

- H X W X D (mm) 50mm X 210mm X 210mm
- Weight(g) 800g

## Support Protocols & Services

### IP Routing Protocols

- Static and IEEE 802.1Q VLAN Routing

### WAN Protocols

- Point-to-Point over Ethernet Protocol for ADSL Networking(PPPoE)
- Dynamic Host Configuration Protocol Networking (DHCP)

### Voice over IP Services

- ITU-T H.323 v3 VoIP Protocol with ITU-T H.235 Security Feature
- SIP protocol support compliant with IETF RFC3261 (or RFC2543)
- H.323 and SIP dual stack support
- G.723.1, G.729.A, G.711 Voice Compressions
- Voice Processing Features Supports
  - VAD, DTMF, CNG, G.168 and T.38 G3 FAX Relay
  - ITU-T H.323 Gateway, Gatekeeper Support

### Network Managements

- Traffic Queuing
- Standard SNMP Agent (MIB v2) Support
- Remote Management using Console, Rlogin, Telnet
- Web based Managements using HTTP Server

### Security Functions

- Standard & Extended IP Access List
- Access Control and Data Protections
- Enable/Disable for Specific Protocols
- Multi-Level User Account Management
- Auto-disconnect for Telnet/Console Sessions
- PPP User Authentication Supports
  - Password Authentication Protocol (PAP)
  - Challenge Handshake Authentication Protocol (CHAP)

### Operation & Managements

- System Performance Analysis for Process, CPU, Connection I/F
- Configuration Backup & Restore for APOS Managements
- Debugging, System Auditing, and Diagnostics Support
- System Booting and Auto-rebooting with Watchdog Feature
- System Managements with Data Logging
- IP Traffic Statistics with Accounting

### Other Scalability Features

- DHCP Server & Relay Functions
- Network Address Translation (NAT) Function
- Port Address Translation (PAT) Function
- Transparent Bridging (IEEE Standard) Function
  - Spanning Tree Bridging Protocol Support
  - Remote Bridging Support
  - Concurrent Routing and Bridging Support
- Cisco Style Command Line Interface(CLI)
- Load Balancing Support
- Network time Protocol(NTP) Support
- Remote Upgrade for APOS Management using FTP/TFTP

### Ordering Information

- AP1005-01 : AP1005 VoIP Gateway Standard Configuration
  - Four(4) FXO Voice Interface
  - Two(2) 10Mbps Ethernet, Console
  - 32bit RISC CPU, 2MB Flash, 16MB SDRAM
  - APOS v5.xx with Operation Manual
  - Including CAB-LAN, CAB-CON
- CAB-LAN : RJ45 Ethernet Cable
- CAB-CON : RJ45 RS-232C Console Cable

## Contact Information

Web site : <http://www.addpac.com>

E-mail : [info@addpac.com](mailto:info@addpac.com)

## AddPac Technology Co., Ltd.

3F, Jeong-Am Bldg., 769-12, Yeoksam-Dong

Kangnam-Gu, Seoul, 135-080, KOREA

Phone +82 2 568 3848

Fax + 82 2 568 3847

2000, AddPac is a registered trademark of AddPac Technology. Specifications and features subject to change without notice. All brands & products are trademarks of their respective organization.