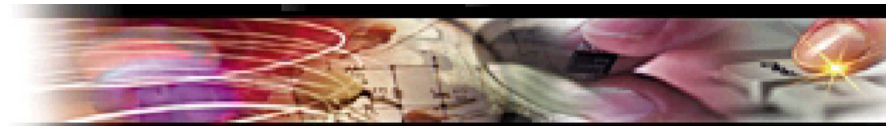


AP1100F VoIP Gateway High-performance, Compact Design



VoiceFinder AP1100F VoIP Gateway



VoiceFinder AP1100F VoIP Gateway provides high-performance voice over IP(VoIP) solution including IP-routing services for small enterprise, government and other public offices as well as Internet game room and Internet based cyber apartment. Moreover, the AP1100F VoIP gateway maintains best voice quality under not only high bandwidth traffic but

also low bandwidth traffic using the latest voice compression algorithm and enhanced QoS management features of AddPac Technologies.

In addition, AP1100F VoIP Gateway can be used in various network environments such as leased line, ADSL, and Cable Modem networking with fixed IP and dynamic IP environments. And VoiceFinder AP1100F VoIP Gateway supports various network protocols such as IP-routing, bridging, PPP, NAT/PAT, and network management features such as SNMP MIB v2, Cisco-style CLI, Web, etc. This VoIP gateway typically was designed using high-performance 32bit RISC microprocessor based architecture with fixed network interface configuration : One(1) 10Mbps Ethernet, One(1) 10/100Mbps Fast Ethernet, and asynchronous serial port for console.

APOS Internetworking Software for AP VoIP Gateway

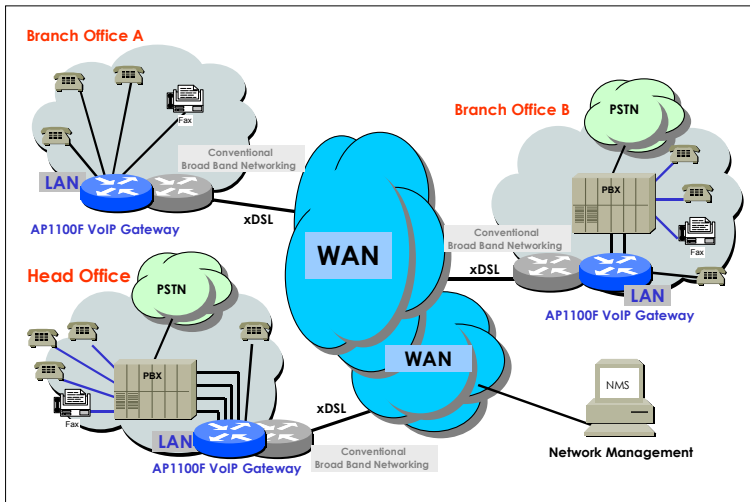
AddPac VoiceFinder Operating System(APOS) is a best VoIP and router software to provide scalability, reliability, stability, and QoS for internetworking solutions. APOS also provides optimized performance and industry standard network functionality with easy-to-use, easy-to-installation, and maintenance.

The AP1100F VoIP Gateway provides **best price-performance ratio** and **effective voice & data networking solution** for customer satisfaction.

Product Highlights

- Powerful 32bit RISC Microprocessor Architectures
- One 10Mbps Ethernet Interfaces
- One 10/100Mbps Fast Ethernet Interfaces
- 8 Port Analog FXS Voice Interfaces
- 8 Port Analog FXO Voice Interfaces
- 4-Port FXS, 4-Port FXO Analog FXO Voice Interfaces
- Standard High-performance VoIP Gateway for Voice Networking Applications
- Multi-protocol Routing Solutions between WAN and LAN Access with H.323 based VoIP Protocol
- ITU-T H.323 v3 VoIP Protocol with ITU-T H.235 Security Feature
- SIP protocol support compliant with IETF RFC3261 (or RFC2543)
- H.323, SIP, and MGCP triple stack support
- AddPac APOS Internetworking Software to provide Scalability, Functionality, Stability, and QoS Control for AddPac VoIP Gateway
- High-performance IP-Routing Capability with Reliability
- Static, Default IP-Routing and IEEE 802.1Q VLAN Routing Protocols
- Point to Point Protocol for ADSL based Broadband Network
- Enhanced QoS Managements for Voice Traffic
- SNMP MIB v2 for Network Management Features
- Standard & Extended Access List for Security Functions
- Essential Scalability Features such as DHCP Server & Relay, NAT/PAT, IEEE Transparent Bridging, IP Accounting, and Debugging / Diagnostics, etc.
- Remote Software Upgrade using FTP & TFTP
- Graceful Compact Enclosure Design with beautiful color

Network Diagram Using AP1100F VoIP Gateway



Hardware Specification

Microprocessor

- CPU 32bit RISC Microprocessor

Memory

- Flash Memory 4Mbyte
- Main Memory 32M bps High-Speed SDRAM
- Boot Memory 512Kbyte Flash Memory

Network Interface

- LAN0 Port One(1) 10/100Mbps Fast Ethernet
- LAN1 Port One(1) 10Mbps Ethernet
- Console Port One(1) RS-232C Interface(RJ45)

Voice Interface Modules

- AP1100-S8 8-Port FXS Analog Voice Interfaces
- AP1100-O8 8-Port FXO Analog Voice Interfaces
- AP1100-S4O4 4-Port FXS, 4-Port FXO Analog Voice Interfaces

Power & Operation Environments

- Power Requirement VAC 110~220V, 50/60Hz, 15Watt
- Operating Temperature 0°C to + 50°C (32° to 122°F)
- Storage Temperature -40°C to + 85°C (-40° to +185°F)
- Relative Humidity 5% to 95% (Non-condensing)

Dimensions

- H X W X D (mm) 50mm X 210mm X 210mm
- Weiaht(a) 800a

Support Protocols & Services

IP Routing Protocols

- Static and IEEE 802.1Q VLAN Routing

WAN Protocols

- Point-to-Point over Ethernet Protocol for ADSL Networking(PPPoE)
- Dynamic Host Configuration Protocol Networking (DHCP)

Voice over IP Service

- ITU-T H.323 v3 VoIP Protocol with ITU-T H.235 Security Feature
- SIP protocol support compliant with IETF RFC3261 (or RFC2543)
- H.323, SIP, and MGCP triple stack support
- G.723.1, G.729.A, G.711 Voice Compressions
- Voice Processing Features Supports
 - VAD, DTMF, CNG, G.168 and T.38 G3 FAX Relay
- ITU-T H.323 Gateway, Gatekeeper Support
- Enhanced QoS Management Features for Voice Traffics

Network Managements

- Traffic Queuing
- Standard SNMP Agent (MIB v2) Support
- Remote Management using Console, Rlogin, Telnet
- Web based Managements using HTTP Server

Security Functions

- Standard & Extended IP Access List
- Access Control and Data Protections
- Enable/Disable for Specific Protocols
- Multi-Level User Account Management
- Auto-disconnect for Telnet/Console Sessions
- PPP User Authentication Supports
 - Password Authentication Protocol (PAP)
 - Challenge Handshake Authentication Protocol (CHAP)

Operation & Managements

- System Performance Analysis for Process, CPU, Connection I/F
- Configuration Backup & Restore for APOS Managements
- Debugging, System Auditing, and Diagnostics Support
- System Booting and Auto-rebooting with Watchdog Feature
- System Managements with Data Logging
- IP Traffic Statistics with Accounting

Other Scalability Features

- DHCP Server & Relay Functions
- Network Address Translation (NAT) Function
- Port Address Translation (PAT) Function
- Transparent Bridging (IEEE Standard) Function
 - Spanning Tree Bridging Protocol Support
 - Remote Bridging Support
 - Concurrent Routing and Bridging Support
- Cisco Style Command Line Interface(CLI)
- Load Balancing Support
- Network time Protocol(NTP) Support
- Remote Upgrade for APOS Management using FTP/TFTP

Ordering Information

- AP1100F : AP1100F VoIP Gateway Standard Configuration
 - One 10Mbps Ethernet, One 10/100 Fast Ethernet
 - Asynchronous Serial Console.
 - 32bit RISC CPU, 8MB Flash, 32MB SDRAM
 - APOS v5.xx with Operation Manual
 - Including CAB-LAN, CAB-CON
- AP1100F-01 : 8 Port FXS Interface (8 X RJ11)
- AP1100F-02 : 8 Port FXO Interface (8 X RJ11)
- AP1100F-03 : 4 Port FXS, 4 Port FXO Interface (8 X RJ11)
- CAB-LAN : RJ45 Ethernet Cable
- CAB-CON : RJ45 RS-232C Console Cable

Contact Information

Web site : <http://www.addpac.com>

E-mail : info@addpac.com

AddPac Technology Co., Ltd.

3F, Jeong-Am Bldg., 769-12, Yeoksam-Dong
Kangnam-Gu, Seoul, 135-080, KOREA
Phone +82 2 568 3848
Fax + 82 2 568 3847

2000, AddPac is a registered trademark of AddPac Technology.
Specifications and features subject to change without notice.
All brands & products are trademarks of their respective organization.