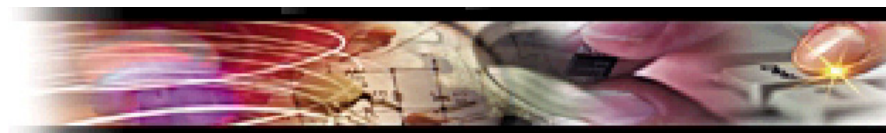


## AP2120 VoIP Gateway High-performance, Compact Design



### VoiceFinder AP2120 VoIP Gateway

VoiceFinder AP2120 VoIP Gateway provides high-performance voice over IP (VoIP) solution including IP-routing services for small enterprise, government and other public offices as well as Internet game room and Internet based cyber apartment. Moreover, VoiceFinder AP2120 VoIP Gateway maintains best voice quality under low speed network using the latest voice compression algorithm and enhanced QoS management features of AddPac Technologies.

In addition, AP2120 VoIP Gateway can be used in various network environments such as leased line, ADSL, and Cable Modem networking with fixed IP and dynamic IP environments.

And VoiceFinder AP2120 supports various network protocols such as IP-routing, bridging, PPP, NAT/PAT, and network management features such as SNMP MIB v2, Cisco-style CLI, web, etc. This VoIP gateway typically was designed using high-performance 32bit RISC microprocessor architecture with fixed network interface configuration: 1-Port 10Mbps Ethernet, 1-Port 10/100Mbps Fast Ethernet, asynchronous serial port for console.

### APOS Internetworking Software for AP VoIP Gateway

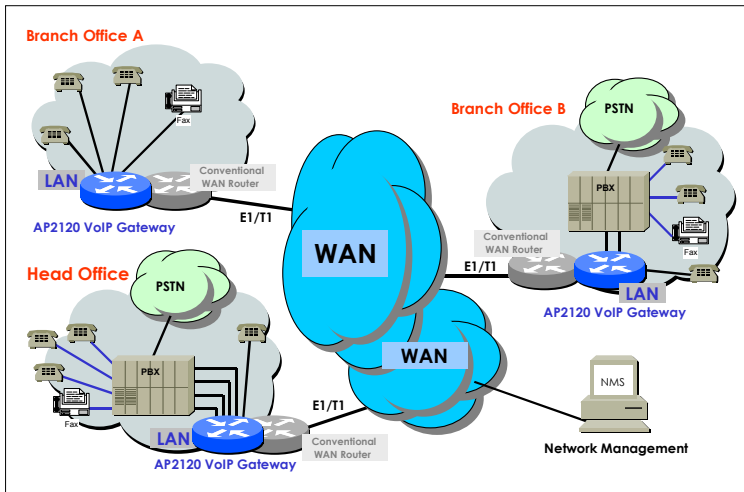
AddPac PassFinder Operating System (APOS) is best router software to provide scalability, reliability, stability, and QoS for internetworking solutions. APOS also provides optimized performance and industry standard network functionality with easy-to-use, easy-to-installation, and maintenance.

The AP2120 VoIP Gateway provides **best price-performance ratio** and **effective voice & data networking solution** for customer satisfaction.

## Product Highlights

- Powerful 32bit RISC Microprocessor Architectures
- One 10Mbps Ethernet for WAN and One 10/100Mbps Fast Ethernet for LAN with Two(2) Voice Interface Modules
- FXS, FXO, and E&M Voice Modules for sixteen(16) Voice Channels
- Standard High-performance VoIP Gateway for Voice Networking Applications
- Multi-protocol Routing Solutions between WAN and LAN Access with H.323 based VoIP Protocol
- G.723.1, G.729A, G.711 Voice Compressions
- ITU-T H.323 v3 VoIP Protocol with ITU-T H.235 Security Feature
- SIP protocol support compliant with IETF RFC3261 (or RFC2543)
- H.323 and SIP dual stack support
- Support Voice Processing Features
  - VAD, DTMF, CNG, G.168, and T.38 G3 Fax Relay
- AddPac APOS Internetworking Software to provide Scalability, Functionality, Stability, and QoS Control for AddPac VoIP Gateway
- High-performance IP-Routing Capability with Reliability
- Static, RIP v1/2, OSPF v2 and IEEE 802.1Q VLAN Routing Protocols
- Traffic Queuing, and SNMP MIB v2 for Network Management Features
- Standard & Extended Access List for Security Functions
- Essential Scalability Features such as DHCP Server & Relay, NAT/PAT, IEEE Transparent Bridging, IP Accounting, and Debugging/Diagnostics, etc.
- Remote Software Upgrade using FTP & TFTP
- Cisco Style Command Line Interface(CLI)
- Standard 19" Rack Mountable Chassis

## Network Diagram Using AP2120 VoIP Gateway



## Hardware Specification

### Microprocessor

- CPU 32bit RISC Microprocessor

### Memory

- Flash Memory 4Mbyte
- Main Memory 32M bps High-Speed SDRAM
- Boot Memory 512Kbyte Flash Memory

### Network Interface

- Fixed LAN0 Port One(1) 10Mbps Ethernet
- Fixed LAN1 Port One(1) 10/100Mbps Ethernet
- Console Port One(1) RS-232C Interface
- Number of Module Two(2) Voice Interface Modules

### Voice Interface Modules

- FXS Voice Module 8-Port FXS Voice Interface Module
- FXO Voice Module 8-Port FXO Voice Interface Module
- E&M Voice Module 8-Port E&M Voice Interface Module
- FXS&FXO Voice Module 4-Port FXS & 4-Port FXO Module

### Power & Operation Environments

- Power Requirement VAC 110~220V, 50/60Hz, 15Watt
- Operating Temperature 0°C to +50°C (32° to 122°F)
- Storage Temperature -40°C to +85°C (-40° to +185°F)
- Relative Humidity 5% to 95% (Non-condensing)

### Dimensions

- H X W X D (mm) 44mm X 444mm X 220mm  
(19" Rack Mountable Chassis)
- Weight(Kg) 2.7Kg

## Support Protocols & Services

### IP Routing Protocols

- Static and default Routing
- IEEE 802.1Q VLAN Routing

### WAN Protocols

- Point-to-Point over Ethernet Protocol (PPPoE) for ADSL
- Dynamic Host Configuration Protocol Networking (DHCP)

### Voice over IP Service

- ITU-T H.323 v3 VoIP Protocol with ITU-T H.235 Security Feature
- SIP protocol support compliant with IETF RFC3261 (or RFC2543)
- H.323 and SIP dual stack support

- G.723.1, G.729.A, G.711 Voice Compressions
- Voice Processing Features Supports
  - VAD, DTMF, CNG, G.168 and T.38 G3 FAX Relay
- ITU-T H.323 Gateway, Gatekeeper Support
- Enhanced QoS Management Features for Voice Traffics

### Network Managements

- Traffic Queuing and Frame-Relay Flow Control
- Standard SNMP Agent (MIB v2) Support
- Remote Management using Console, Rlogin, Telnet
- Web based Managements using HTTP Server

### Security Functions

- Standard & Extended IP Access List
- Access Control and Data Protections
- Enable/Disable for Specific Protocols
- Multi-Level User Account Management
- Auto-disconnect for Telnet/Console Sessions
- PPP User Authentication Supports
  - Password Authentication Protocol (PAP)
  - Challenge Handshake Authentication Protocol (CHAP)

### Operation & Managements

- System Performance Analysis for Process, CPU, Connection I/F
- Configuration Backup & Restore for APOS Managements
- Debugging, System Auditing, and Diagnostics Support
- System Booting and Auto-rebooting with Watchdog Feature
- System Managements with Data Logging
- IP Traffic Statistics with Accounting

### Other Scalability Features

- DHCP Server & Relay Functions
- Network Address Translation (NAT) Function
- Port Address Translation (PAT) Function
- Transparent Bridging (IEEE Standard) Function
  - Spanning Tree Bridging Protocol Support
  - Remote Bridging Support
  - Concurrent Routing and Bridging Support
- Cisco Style Command Line Interface(CLI)
- Load Balancing Support
- Network time Protocol(NTP) Support
- Remote Upgrade for APOS Management using FTP/TFTP

### Ordering Information

- AP2120-01 : AP2120 VoIP Gateway Standard Configuration
  - One(1) Fast Ethernet, One(1) Ethernet, Console
  - Two(2) Voice Interface Modules
  - 32bit RISC CPU, 4MB Flash, 32MB SDRAM
  - APOS v5.xx with Operation Manual
  - Including CAB-LAN, CAB-CON
- 2120-FXS8 : 8 Port FXS Interface Module
- 2120-FXO8 : 8 Port FXO Interface Module
- 2120-E&M8 : 8 Port E&M Interface Module
- 2120-FXS4FXO4 : 4 Port FXS & 4Port FXO Interface Module
- CAB-LAN : RJ45 Ethernet Cable
- CAB-CON : RJ45 RS-232C Console Cable

## Contact Information

Web site : <http://www.addpac.com>

E-mail : [info@addpac.com](mailto:info@addpac.com)

## AddPac Technology Co., Ltd.

3F, Jeong-Am Bldg., 769-12, Yeoksam-Dong  
Kangnam-Gu, Seoul, 135-080, KOREA  
Phone +82 2 568 3848  
Fax + 82 2 568 3847

2000, AddPac is a registered trademark of AddPac Technology. Specifications and features subject to change without notice. All brands & products are trademarks of their respective organization.