

Exinda x800/x800HP WAN & Application Acceleration Solution

The Network Challenge

The Wide Area Network (WAN) has inherent delay and bandwidth limitations. Applications deployed across the WAN are inefficient and slow due to these limitations. Furthermore, repetitive data is sent across the WAN, increasing total utilization and introducing congestion. Various applications further compete for these limited WAN resources causing congestion and degradation of critical applications. IT managers are realizing that it is far more economic and effective to manage and optimize their existing infrastructure by understanding how it is used, defining what's important for the business and accelerating WAN and application performance.

The Solution

Exinda Networks provides a range of fully Integrated WAN & application acceleration (AA) appliances to accelerate the performance of enterprise applications over the WAN. Combined with Exinda's award-winning traffic management technologies, they deliver the complete solution for dynamic performance delivery across the WAN.

Exinda's x800 range offers a full spectrum of Application Acceleration, WAN Optimization and Traffic Management technologies in a proven, resilient platform. Businesses can produce exhaustive network reports, manage network usage, solve congestion issues, prioritize sensitive services and enable users to gain faster and uninterrupted access to applications across the world. Exinda's transparent acceleration protocol further allows a seamless network integration leaving all access control rules and IDS/IPS policies in place.

Exinda Unified Performance Management (UPM)

UPM appliances are designed to accelerate applications on the network, measure application response times, manage applications at Layer 7 and report on system wide application usage on a unified platform.



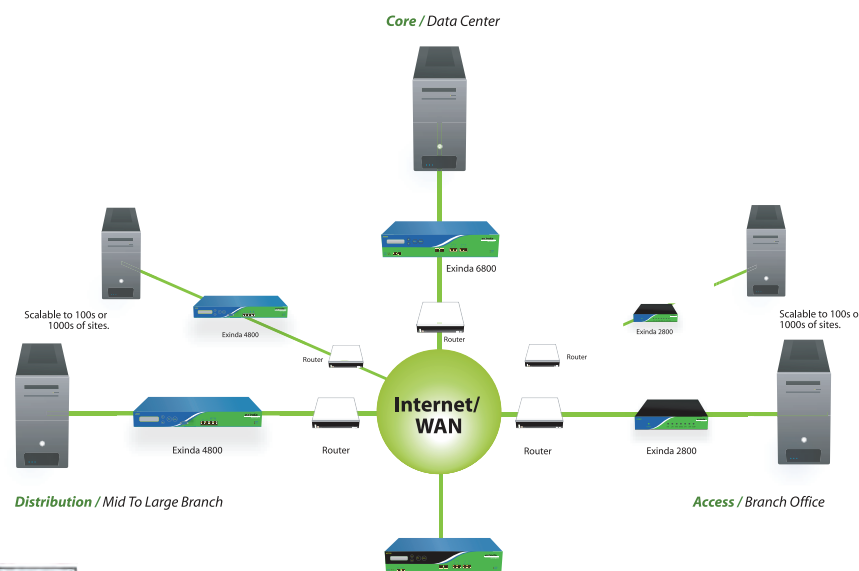
Product Brief

The Exinda x800 offers acceleration and optimization of critical applications. It combines TCP and CIFS acceleration, WAN memory (data caching & reduction), WAFS functionality and Exinda's full spectrum of Layer 7 Traffic Management & WAN Optimization technologies.

Benefits

- Reduce infrastructure costs
- Accelerated WAN applications deliver high productivity gains
- Optimized & controlled WAN communications
- Significant communications costs reductions
- WAFS delivers Server Infrastructure centralization and consolidation
- Maintain dynamic, resilient WAN performance
- Reduced infrastructure and upgrade costs
- Ensure predictable application performance
- Comprehensive Layer 2 to Layer 7 visibility
- Comprehensive, automated reporting
- Reduced network troubleshooting costs
- Reduced business continuity risk
- Voice & data effectively converged and prioritized

Exinda x800 is the only true UPM solution available today.



Exinda Service Delivery Point (SDP)
Hosted or Appliance Based Architecture
Global WAN Acceleration Management System
Scalable to 1000s of systems managed

exinda
networks

Specifications

Model	2800			4800				6800	
Licensed Acceleration Bandwidth Mbps	1	2	6	1	2	10	20	10	20
WAN Optimization & Monitoring Bandwidth (Mbps) : Options up to:	10	10	10	2	15	45	100	100	500
Device Throughput (Mbps)	100	100	100	100	100	100	100	1Gbps	1Gbps
Max Concurrent Flows	32000	32000	32000	32000	64000	128000	256000	256000	384000
Automated PDF Reports	4	4	4	4	4	8	16	20	32
Configurable SLA Reports	10	10	20	20	70	100	120	100	250
Policy Based Circuits	2	4	4	4	4	16	24	32	64
Policy Based Virtual Circuits	16	32	64	128	128	256	384	768	832
Policies	64	128	128	128	128	256	384	1024	1536
New L7 Connection Rate (max/sec)	30	30	30	100	100	100	100	400	400
ARM Objects Monitored	2	5	5	5	5	5	10	10	20
Application Acceleration									
Accelerated TCP Connections	50	100	150	150	200	1200	2000	4000	5000
CIFS Acceleration	■	■	■	■	■	■	■	■	■
Compression	■	■	■	■	■	■	■	■	■
WAFS Functionality	■	■	■	■	■	■	■	■	■
WAN Memory (Data Sequence Caching)	■	■	■	■	■	■	■	■	■
Link Utilization Maximization	■	■	■	■	■	■	■	■	■
Packet Aggregation	■	■	■	■	■	■	■	■	■
Traffic Flow Optimization	■	■	■	■	■	■	■	■	■
Application Pipeline (accelerated open)	■	■	■	■	■	■	■	■	■
Hardware									
Network Interfaces	4	4	4	4	4	4	4	7	7
Ethernet Bypass Pairs	1	1	1	1	1	1	1	2	2
Network Expansion Ports (optional)				2	2	2	2		
Console Port	RS-232 male DB-9			RS-232 male DB-9				1xCOM (RJ45)	
Dual Power Supplies								■	■
Weight (kg)	2			6.5				13	
Dimensions (WxHxD)	214x44x150mm - 8.43"x1.73"x5.91"			424x43.5x380 mm - 16.8"x1.72"x11"				424x88x530mm - 16.8"x3.45"x20.9"	
Power & Environment									
Power	One power jack 12V, 5A 100/240 VAC, 50-60Hz			DC Maximum Requirement 100W, 100/240 VAC, 50-60Hz				DC Maximum Requirement 230W, AC/DC 90-245VAC full range @ 47-63Hz	
Approvals	CE, FCC Certified / RoHS			CE, FCC Certified / RoHS				CE, FCC Certified / RoHS	
Disk Storage (GB)	40	40	40	250	250	250	250	250	250

Technology

Exinda x800 High Performance (x800HP)

Delivering true UPM compatible WAN Acceleration, the Exinda x800HP series will allow you to choose the WAN monitoring and optimization performance level between 2Mbps and 500Mbps suited to your WAN or Internet link speeds, and seamlessly integrate the Application and TCP Acceleration bandwidth levels between 1 Mbps and 155Mbps that match your business requirements or budget allocation.

TCP & CIFS Acceleration

Reduces the effects of latency and increase throughput of TCP & CIFS applications including HTTP, Microsoft applications, file transfers and remote backups. Increases WAN responsiveness up to a factor of up to 5,500%.

WAN Memory

Reduces the amount of data sent and increases traffic throughput. Significantly reduces delay on multiple gets of repetitive data. Increases WAN capacity by a factor exceeding 2,000%.

Application Layer 7 Classification and Monitoring

Signature based classification identifies applications such as Peer-to-Peer and those that use common protocols such as HTTP. Exinda's high speed hardware (ASIC) based classification (6720) allows wirespeed monitoring at speeds of up to 1 Gbps. Track usage and network utilisation by application, hosts or conversations. Extensive reporting via automated PDF and CSV exports.

Features

- TCP & CIFS protocol acceleration
- WAFS functionality
- WAN memory (data caching & reduction)
- Classification of applications at Layer 7 with automated Layer 7 signature updates
- Realtime drill down
- Automated PDF reporting
- Policy based OoS
- Service Level Management
 - > Network Service (remote SLA)
 - > Application Service (ARM)
- SIP based VoIP reporting
- Classify Citrix published Applications (ASAM)
- URL analysis (ASAM)
- Adaptive Response
- 95th percentile calculations
- Auto Discovery



To view a matrix of available options, visit:

www.exinda.com/x800HP.html

Application Specific Analysis Modules (ASAM)

Exinda supports modules for detailed classification and analysis of specific applications such as HTTP, VoIP and Citrix. Monitor voice calls and conversations in realtime.

Application Response Measurement (ARM)

Monitor application response times across network and server infrastructure. Measure & manage user experience across applications.

Adaptive Response (AR)

Set alerts, notifications and run custom scripts based on system wide triggers.

Policy based QoS

Allow for granular traffic control and application quality of service (QoS).